

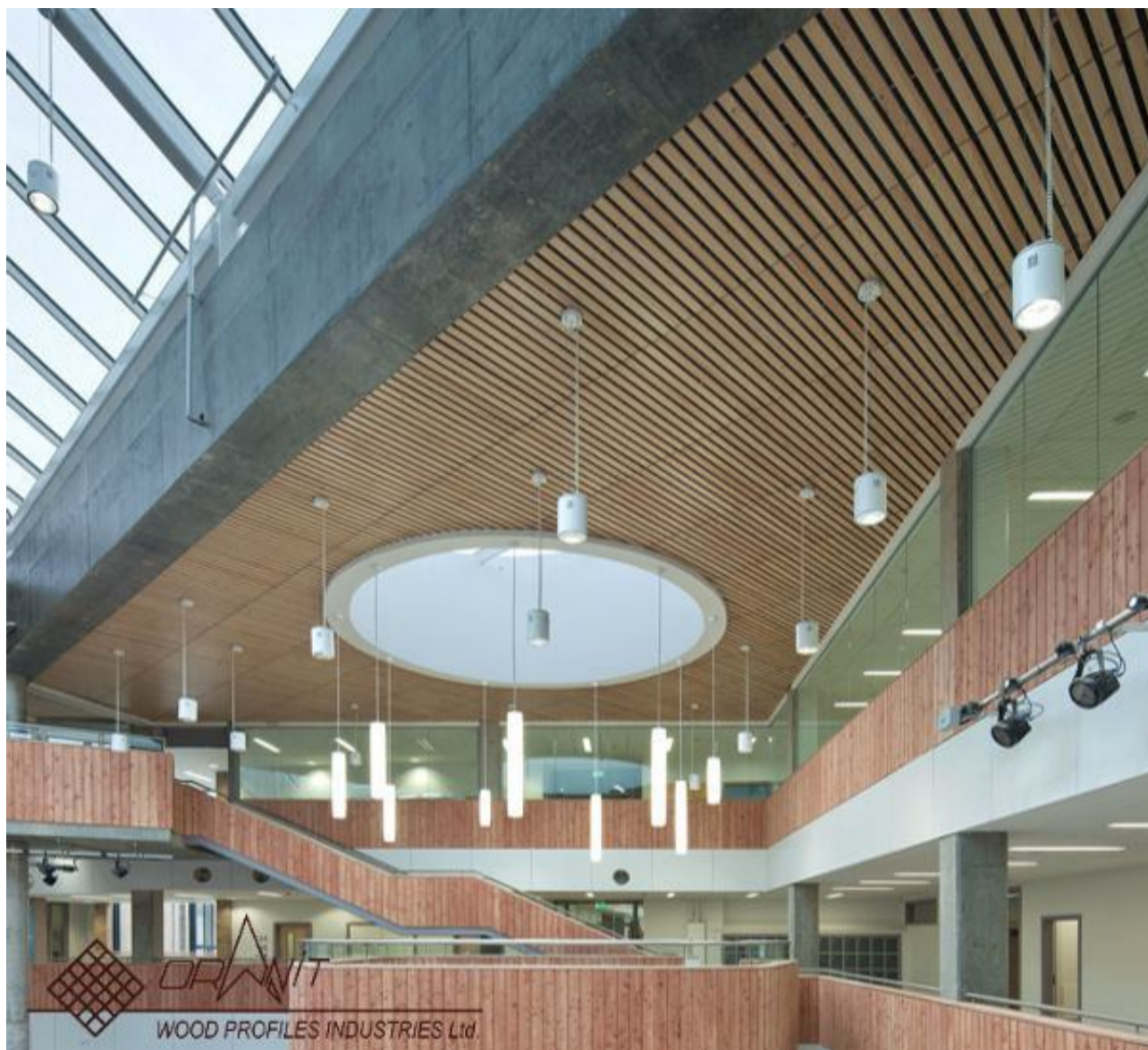
Having trouble reading this email? Click [here](#) to view it in your browser.



Inspiration...

Issue 32

4th March 2014



Product: Shiluvit by Oranit

Architect: Ingenium Archial Architects Ltd

Contractor: Graham Construction

Installer: Moorcon

Project: Port Glasgow Shared Campus School

Officially opened Spring term 2014 the Port Glasgow Shared Campus School is the first project of its kind in Scotland.

The new school building houses both Port Glasgow High School and St Stephens High, as well as sharing its ample resources with the Craigmarloch Additional Support Needs School.

Almost 500m² of Shiluvit product has been used to clad the high ceilings in the communal 'agora' atrium of the building, following through to the second floor corridors for a seamless effect.

We are also delighted to have the new brochure for this product, please contact us if you would like a copy or download it [here](#).

If this inspires you for one of your projects we would love to hear from you!

For more information about LSA Projects Ltd, the products we offer and our extensive project experience please contact us at:

LSA Projects Ltd

The Barn | White Horse Lane | Witham | Essex | CM8 2BU

T: 01376 501199 E: sales@LSAprojects.co.uk W: www.LSAprojects.co.uk

[Find us on Facebook](#)

[Follow us on Twitter](#)

[Connect with us on LinkedIn](#)

Click [here](#) to learn more about the product used and [here](#) to download this email as a pdf.

If you do not wish to receive these emails in future, please click [here](#) to unsubscribe.