

Having trouble reading this email? Click [here](#) to view it in your browser.



Inspiration...

31st October 2018

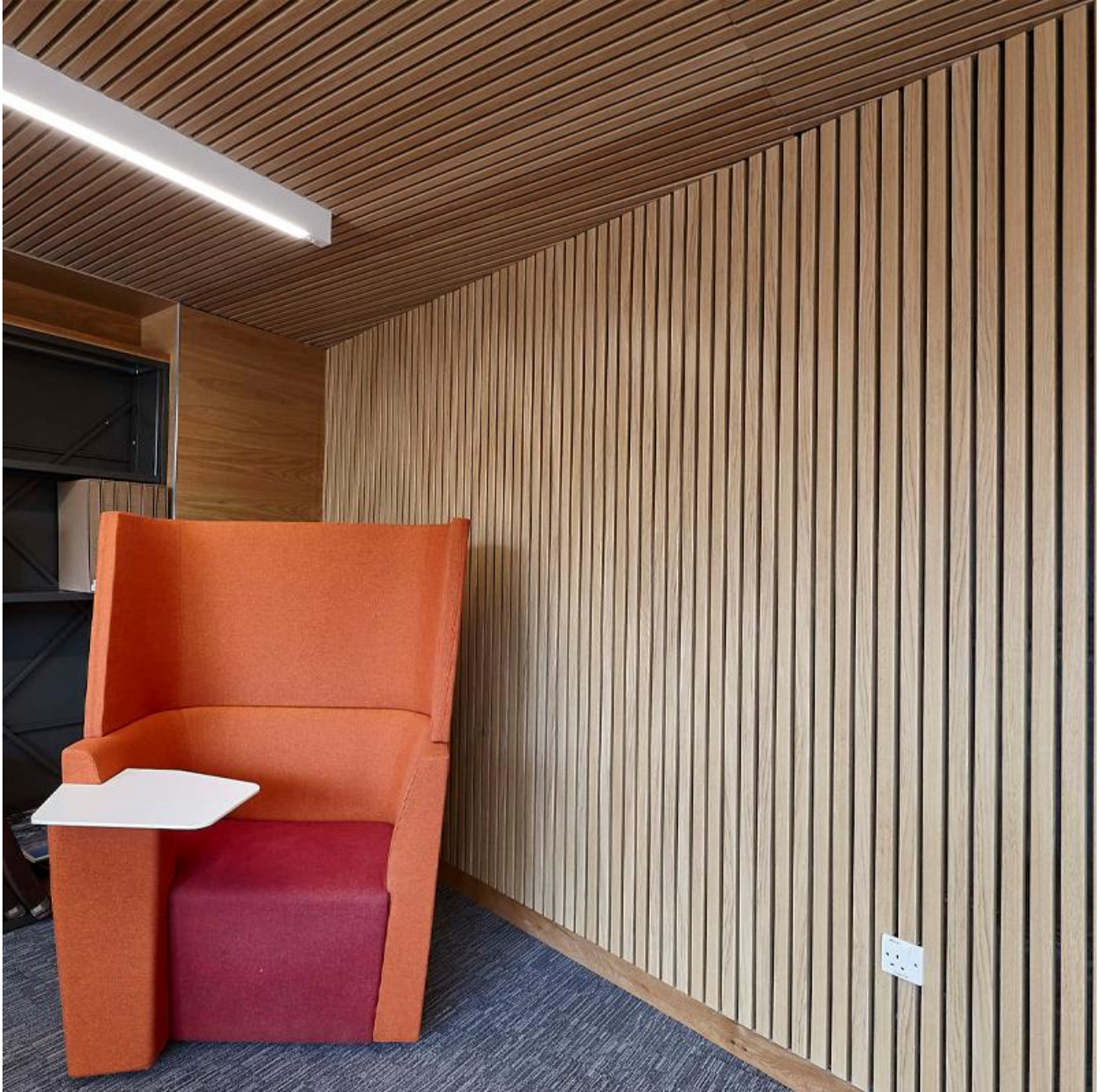
Inspiration 58

Inspiration: Royal Holloway University

Product: Linear Rib

Architect: Associated Architects

Installer: Rosguill Developments Ltd



Emily Wilding Davison Library, Royal Holloway University - London (2017) Adam Coupe Photography



Specification:
Linear Wall and Ceiling Ribs
Natural Oak Veneer
38mm wide x 25mm deep
ribs at 50mm c/c

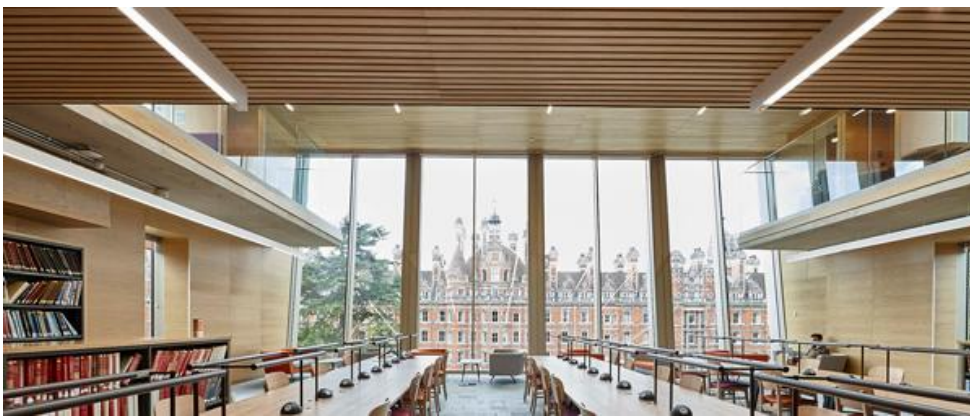
Quantity:
2,000m²
38,000 lm

LSA Projects Ltd are proud to finally share with you part one of the case study on our favourite project from 2017; The Emily Wilding Davison Library at The Royal Holloway University in Egham, Surrey. In addition to the linear rib elements LSA supplied over 4,000m² of [Gustafs Panel System](#) to the walls and ceilings of the new £57m addition to the historic campus.

The building was opened in October 2017 by Her Royal Highness The Princess Royal and The Chancellor of the University and named in honour of 1893 Royal Holloway alumni and famous suffragette Emily Wilding Davison.

The 24 hour library houses over half a million books, access to over 40,000 literary journals as well as research data and archives, art collections, and an archive of rare and historic books and papers dating back to the 16th century.

The 10,000m² building was designed to sit in harmony with the adjacent Founders Building; the two are joined by Founders Square which hosts a range of activities and events for students and other University collaborators. The library also provides a panoramic view of the historic Founders Building through the multi-storey picture windows found in the study social break-out spaces on the first and second floors.



Internally, warm toned and timeless natural Oak timber veneered ribs (and panels) were installed to the walls and ceilings in all areas of the library and complemented by glass balustrading, exposed concrete and white baffled ceilings, and coloured accent furniture throughout.

Linear ribs were specified in part for the versatility of installation, the same product can be installed to both walls and ceilings and can be easily modified on site for a perfect finish. By design The Euroclass B-s1,d0 (for fire resistance) gypsum core of the ribs gives a secure base for the industrially glued veneer or foil finish as well as being a stable material for cutting ensuring the ribs will never warp over time.

Acoustics and sound control are important in a library, especially with large, clear and open spaces like the atriums and breakout spaces at the Davison building. Linear ribs provide acoustic control based on the gap between ribs, the percentage open area that this creates controls the amount of sound that can be absorbed by the installation and in turn determines the acoustic class. The larger the gaps are between the ribs the higher the percentage open is and the better the acoustic absorption class, the installation at RHUL had 12mm gaps, 24% open area, and achieved acoustic class C.

Many thanks to our friends at Associated Architects for their kind specification and excellent design and Rosguill Developments for their expert installation.

For a larger gallery of Royal Holloway images check out the [Linear Rib](#) and [Gustafs](#) entries in our [web gallery](#).

If this inspires you for one of your projects we would love to hear from you!

Please follow the link on the right to download the product brochure.

LSA Projects Ltd | The Barn White Horse Lane Witham Essex CM8 2BU

